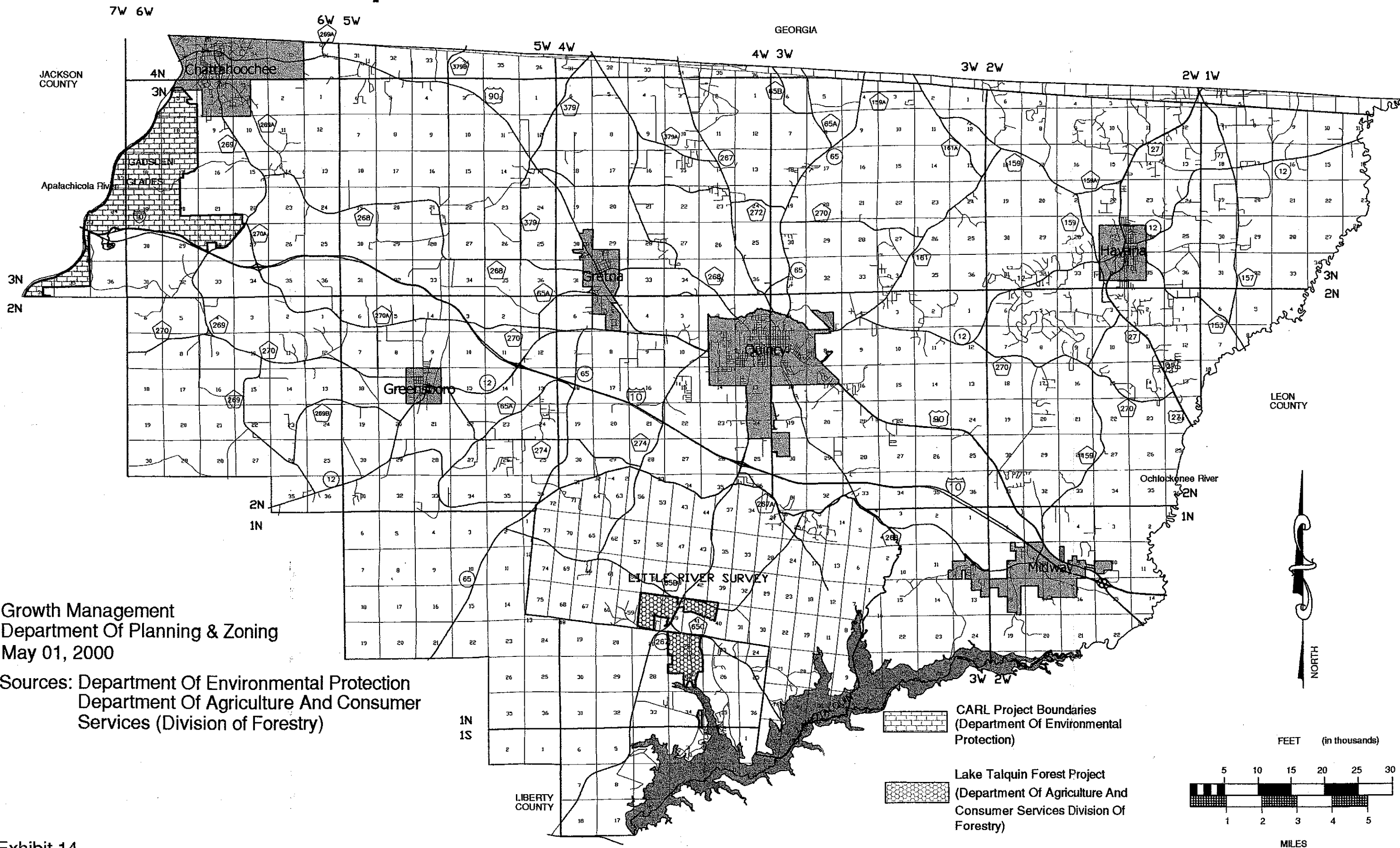


Proposed Conservation Lands



Growth Management
 Department Of Planning & Zoning
 May 01, 2000

Sources: Department Of Environmental Protection
 Department Of Agriculture And Consumer
 Services (Division of Forestry)

CARL Project Boundaries
 (Department Of Environmental
 Protection)

Lake Talquin Forest Project
 (Department Of Agriculture And
 Consumer Services Division Of
 Forestry)

